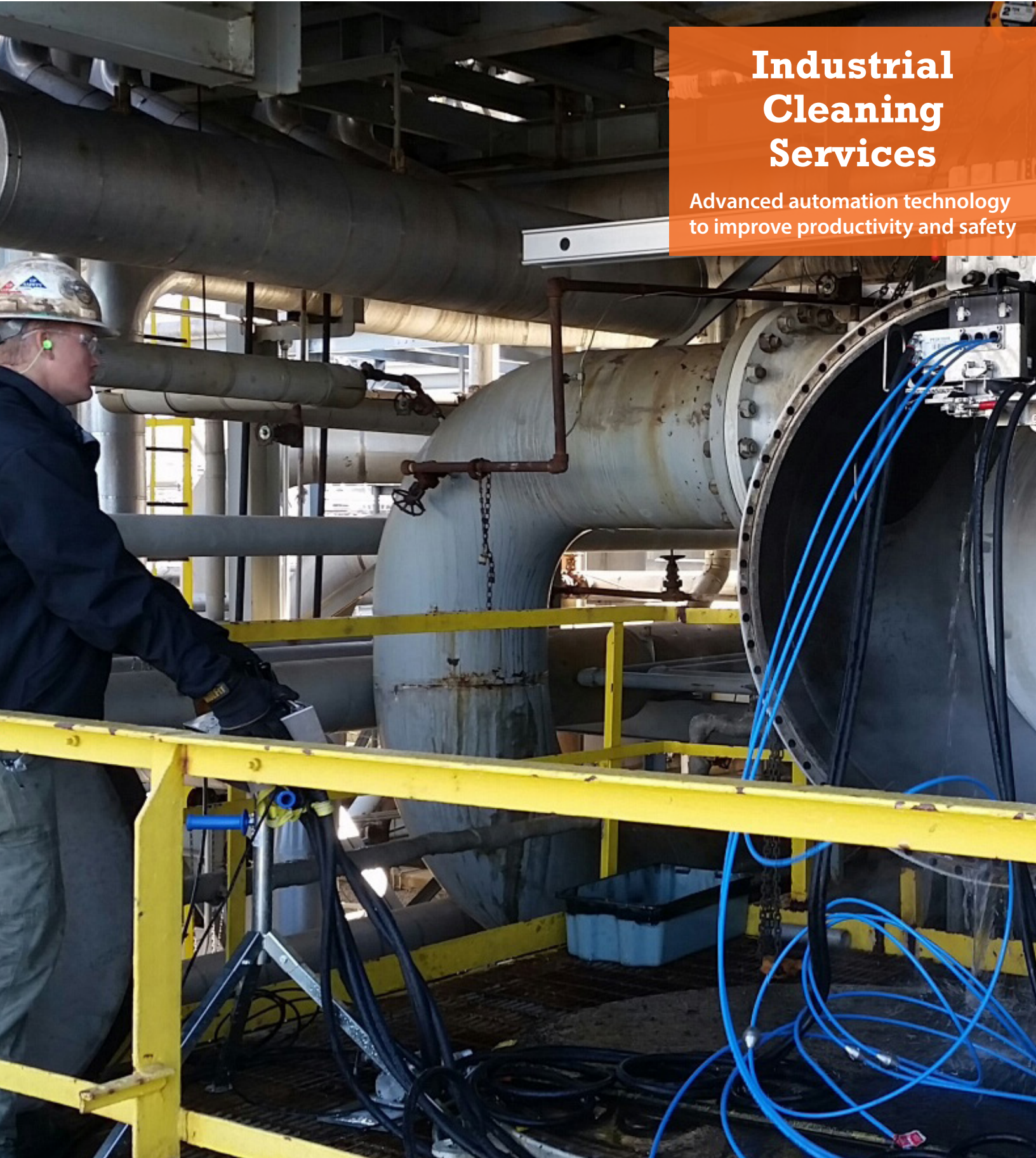


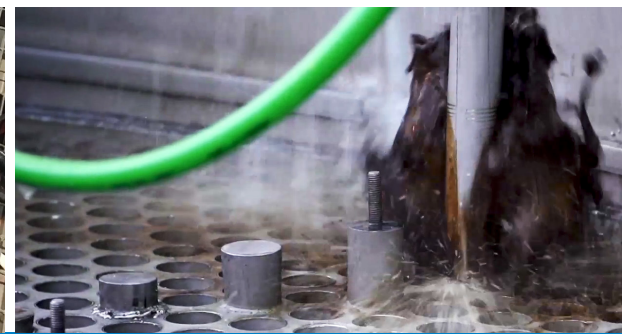
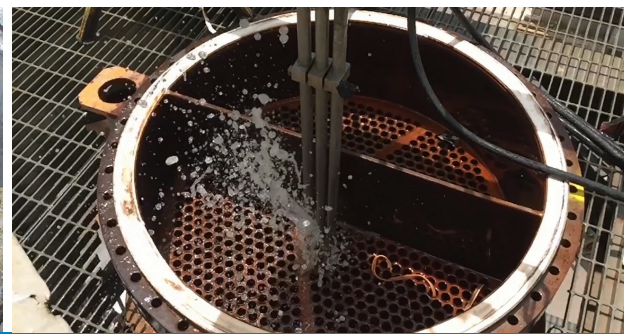
Industrial Cleaning Services

Advanced automation technology
to improve productivity and safety





A commitment to safety is a commitment to automation.



Safety, quality, and integrity are hallmarks of Thompson Industrial Services.



Complete Range of Specialty Industrial Cleaning Services

Unplanned emergencies and extended outages to clean plant equipment can dramatically impact operations, maintenance support activities and costs. Thompson Industrial Services, LLC has a stellar 36-year reputation of providing dependable, safe and creative outcomes from planning through execution to minimize downtime and ensure seamless performance.



EPIC® HRSG Off-Line Cleaning

- Optimizes Efficiency
- Significantly Reduces CT Back Pressure
- Eliminates Scaffolding



Automated Water Blasting

- Applications of 10,000-40,000 PSI
- Pipelines, Tanks, Process Equipment & more
- Non-entry Cleaning
- Customized Applications



Ultra-High Pressure Water Blasting & Cutting

- Industrial Deposit Removal
- Surface Preparation
- Cutting Applications



Vacuuming

- Dry, Wet or Sludge
- Hot materials up to 600°F
- In-line Vacuum Containment Boxes
- Enhanced Efficiency Applications



Dust Removal

- Safely Remove Combustible, Explosive and Fugitive Dust
- Specialized Foam Cleaning
- High/Remote Area Removal
- Portable & Ultra Efficient
- NFPA and OSHA Compliant



Pneumatic- & Hydro-Vacuum Excavation

- Safely Expose Subsurface Utilities and Infrastructure
- Pneumatic (Dry) Assist or High Pressure Water



Cryogenic (Dry Ice) Cleaning

- Chemical- and Waste-Free
- Safe for Operating Machinery
- FDA & Ultra-Clean Applications
- Non-abrasive, Non-corrosive & Non-conductive



Chemical Cleaning

- Boilers to Piping
- Polymer to Water Scale Deposits
- Foam, Gaseous, Vapor & Liquid Mediums



FINFOAM

- Effectively cleans finned tubes with foam
- Will not damage sensitive aluminum fins
- Guaranteed results or you don't pay!
- www.finfoam.com



High Volume Water Blasting

- High Energy Pumping Units up to 2,300 HP
- Pressure up to 10,000 PSI and flows to 1,200 GPM
- Automated and robotic equipment



In-Situ SCR Catalyst Cleaning

- Safe, most effective ash removal method for EPA compliance
- Clears plugs other methods can't
- Decreased ammonia slip & increased plant efficiency

Proven

Thompson has a long, proven history of providing even the toughest industrial cleaning services with the utmost quality and efficiency. We put your organization's goals and objectives first, always aiming for on-time, on-budget delivery with as little downtime as possible.

Accountability

Thompson upholds only the highest professional standards whether on the job site or completing accountability assessments to benchmark performance and productivity. Every step of the way, we welcome client feedback and clearly report quality reviews, quantitative performance measures and reports for our valued clients. Our detailed cost reporting maximizes efficiency, realizing savings that translate into value for your business.

Integrity

With steadfast core values of maintaining ethics and integrity, Thompson scrutinizes the details of every project from deadlines to performance using accountability standards and quantitative performance measures befitting of our reputation. We do what we say we will do and we stand by it without question.

Safety

Thompson's safety performance measures and benchmarks are among the industry's most stringent. From operations to field performance, we have a strong reputation in the industry for positive safety performance and have for over 30 years. Our safety-first culture is supported by zero-tolerance attitude for unsafe practices in the workplace, reinforced by an average of over 3,000 unannounced field safety observations.



Boiler floor before



Boiler floor after





Safely expose utilities and lines buried more than 20 feet deep with Thompson's pneumatic- or hydro-vacuum excavation services.

Project & Outage Management Team

Thompson takes pride in offering the safest and most productive service possible, saving clients time, money and unneeded risk. Having the advanced automation equipment and highly skilled team is two of three crucial components to achieving that goal. The third component is providing seamless execution through an organized plan and follow-through.

Thompson has developed a project management team (PMT) to ensure a safe, well-executed, cost-controlled project or shutdown with optimal results. The PMT is composed of decades of experience in industrial cleaning. The PMT plans, organizes, motivates and controls resources, procedures and protocols to achieve all project goals. The primary challenge is to meet or exceed clients' objectives while honoring the preconceived constraints of scope, time, quality and budget. The PTM combines extensive pre-planning, on-site execution, daily reporting and post-project review.

Industrial cleaning solutions that exceed expectations, maximize operations and limit risk.

LOCATIONS

Thompson Industrial Services, LLC offers the broadest line of specialized industrial cleaning services with advanced automated technology and seasoned personnel. Founded in 1986 and headquartered in Sumter, SC, we now have over 20 strategically positioned service locations across the Southeast and Central US, with mobile operations across the globe.



Headquarters

104 N. Main St. Sumter, SC 29150
(888) 317-0634
Fax: (803) 773-1955
Email: info@thompsonind.com



International Services

910-612-5468

Ahoskie, NC

(252) 356-4732
Fax: (252) 356-4297

Creola, AL

(803) 229-5059

Macon, GA

(800) 849-8040
Fax: (803) 934-8935

Sumter, SC

(803) 773-8005
Fax: (803) 934-8935

Athens, TN

(423) 507-6117
Fax: (423) 746-2892

Decatur, AL

(662) 570-1008
Fax: (256) 584-8094

Owensboro, KY

(270) 683-1203
Fax: (270) 683-1730

Shreveport, LA

(318) 746-1825
Fax: (318) 746-1828

Augusta, GA

(706) 828-4420
Fax: (706) 828-4425

Georgetown, SC

(843) 266-7940
Fax: (843) 569-3443

Richmond, VA

(804) 458-0300
Fax: (804) 458-0302

Williamstown, WV

(803) 934-0138
Fax: (804) 458-0302

Charleston, SC

(843) 266-7940
Fax: (843) 569-3443

Houston, TX

(281) 471-1774
Fax: (281) 471-1779

Savannah, GA

(800) 849-8040
Fax: (803) 934-8935

Wilmington, NC

(910) 655-5182
Fax: (910) 655-2475

Charlotte, NC

(704) 393-2888
Fax: (704)-921-0186

Jacksonville, FL

(904) 741-0317
Fax: (904) 741-0331

St. Gabriel, LA

Thompson + FINOAM [®] A Division of
Thompson Industrial Services, LLC
(225) 673-2630
Fax: (225) 744-3184

Covington, VA

(804) 458-0300
Fax: (804) 458-0302

Louisville, KY

(502) 222-8881
Fax: (502) 222-8810

